

Linear 800 Standard log set installation

Experience has shown that the majority of performance problems are caused by burn media being installed incorrectly. Please take the time to read and follow these instructions as malfunctioning due to incorrect burn media placement is not covered by warranty.

- The Linear MUST NEVER be used with other burn media or burn media that is damaged.
- The Linear burn media sets are different and cannot be interchanged, ensure you have ordered the correct set before installation.

Correct placement

It is important to place the burn media in the correct position. Incorrect placement can create carbon build-up and affect performance. Malfunctioning due to improper placement is not covered by warranty.

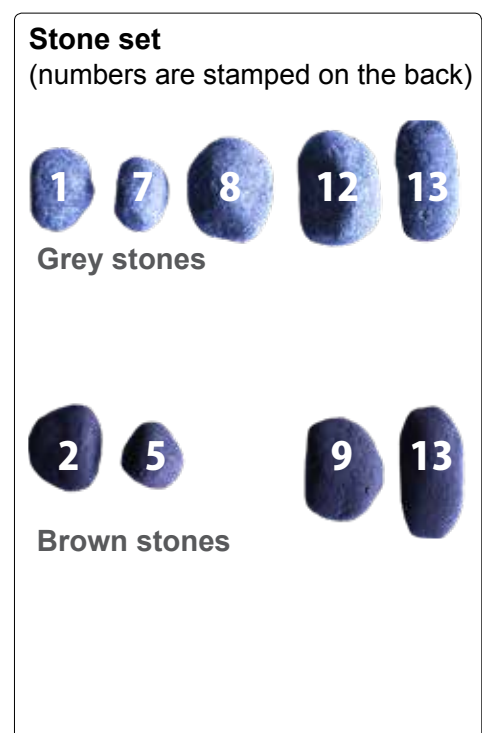
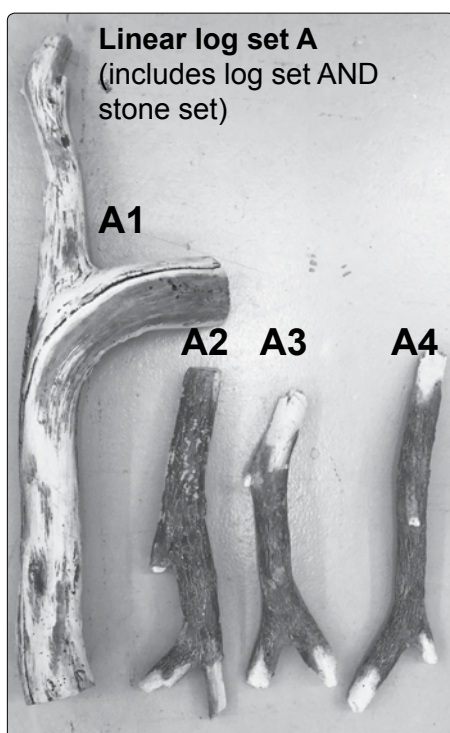
Single-sided/double-sided

When installing the burn media you will ALWAYS be working on the side where the pilot assembly is to the back of the firebox.

R2900 Linear 800 standard driftwood log set kit contents:

Part number	Description	Quantity
13044	Vermiculite	1 bag (approx. 0.375 L)
13476	Wire wool (glowing ash)	1 bag (approx. 3 g)
13480	Log set A and stone set ¹	4 logs and 9 stones

¹ Log set A and stone set come packaged in the same box





We recommend identifying the log sections before installation—lay them on the floor in a configuration resembling the above. This will ensure you're not forcing incorrect log pieces onto the burner supports and scratching the paint.

1. Fold up the laser cut burner surrounds and tabs

The burners have laser cut sections and tabs that need to be folded up (refer images below) to locate the different log sections.





2. Spread vermiculite

Using the image above as reference, spread (DO NOT POUR) approximately three quarters of the bag of vermiculite across the burner section in a single layer. Start the fire and check for complete burner ignition.

Important:

- Avoid blocking the pilot and flame rod ports
- Ensure clearance around the left and right hand log locators

3. Add the wire wool

Remove sections of the wire wool and place where the flames will be. These provide a glow effect and will enhance the flame picture.

4. Install the large A1 log

Set A1 against the 'L' tab on the LH end, and the straight tab of the RH end.

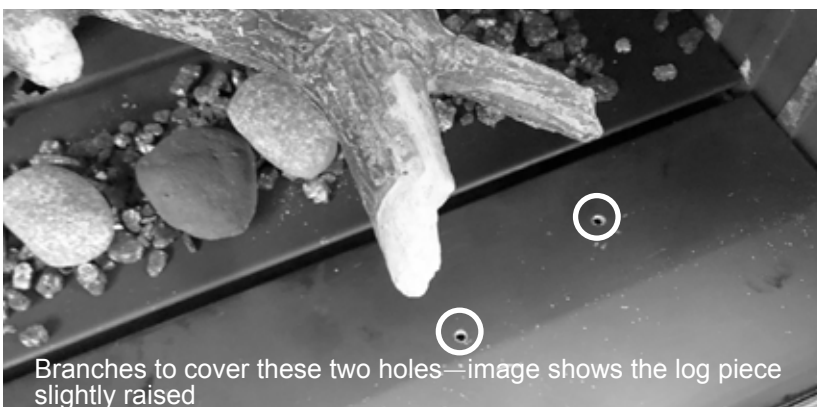


Please note:
Stones are not in place at this point, pretend they are not there.

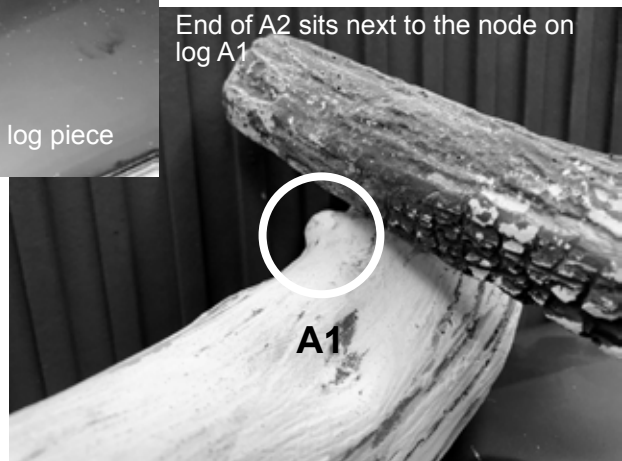


5. Install the A2 log

Locate the branches of A2 over the two holes on the RH end of the front burner. Set the back section of the log next to the node on the RH end of A1.



Also use the image at the top of the next page to assist in positioning.





6. Install the A4 log

Set A4 against the location tab and set as shown. It may need to be adjusted slightly when the burner is going to avoid impingement.

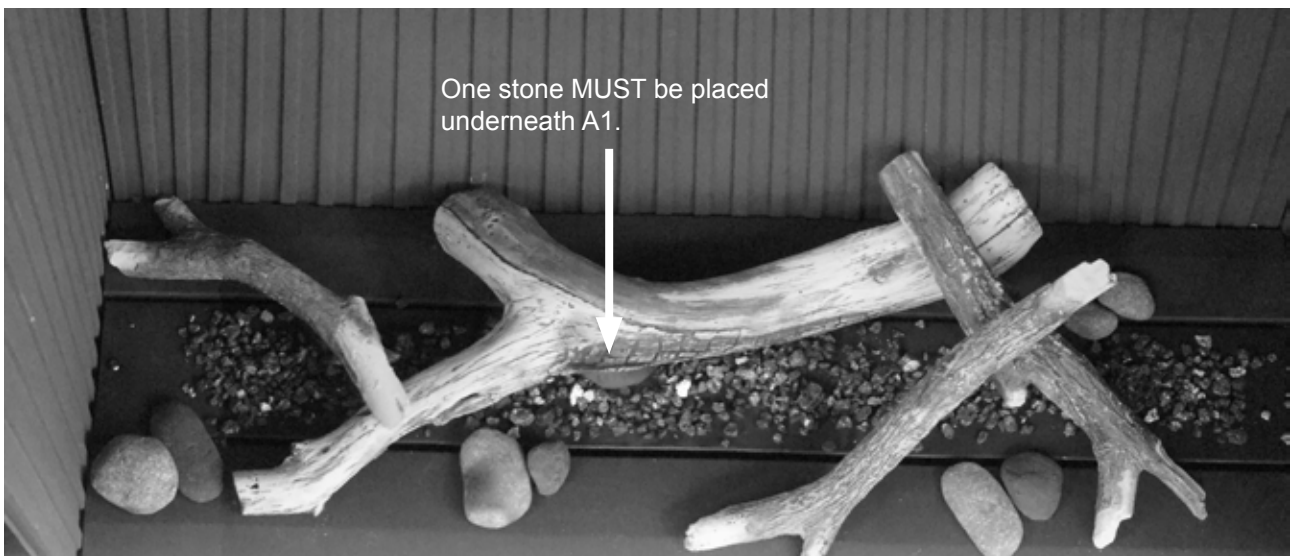


6. Install the A3 log as shown



7. Install the stone set

Place one stone under A1, this affects impingement on the log and may need to be adjusted. Place remaining stones as desired. They are decorative and can be placed liberally, so long as they are not blocking any burner ports. You can use the image on p.2-3 or below as reference for placement.



8. Position left over vermiculite

Place the remaining vermiculite around the burners and use to cover the metal log locator brackets, if they are showing, and any other gaps.

9. Test operation

Check for cross-lighting and complete flame across all burners, and check impingement on the logs. Adjust logs as required. Some flame may lean back in the fire until the glass has been installed. Check again with the glass installed, using the below image as reference for the correct flame pattern.



Rinnai.co.nz

Tel: 0800 746 624

<http://www.youtube.com/rinnainz>

<http://facebook.com.rinnainz>

Linear 800 standard log set installation 13568-B