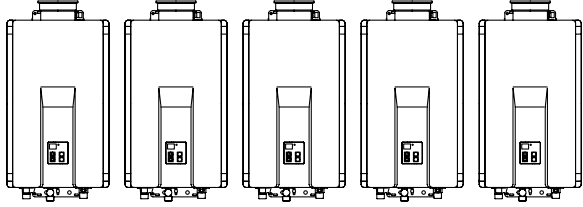




Manifold Electronic Control System Installation Instructions

MSB-C3



Note:

- Up to 5 water heaters can be connected together using the MSB-M and MSB-C3 kits.
- When over 5 water heaters are connected together, MSB-M units are connected using MSB-C2 kits.
- If multiple MSB-M are used, then at least three water heaters should be connected to each MSB-M.
Ex: With 7 water heaters, one MSB-M should control 4 water heaters and the other MSB-M should control 3 water heaters.
- United States & Canada: For use with Rinnai Tankless Water Heaters (except for models V53e, V53i and R63LSe which must use pressure activation valves, PVA).
- Please contact Rinnai if you have further questions on the applicable water heater models.

WARNING

Disconnect all water heaters from their power source before carrying out the following installation procedures.

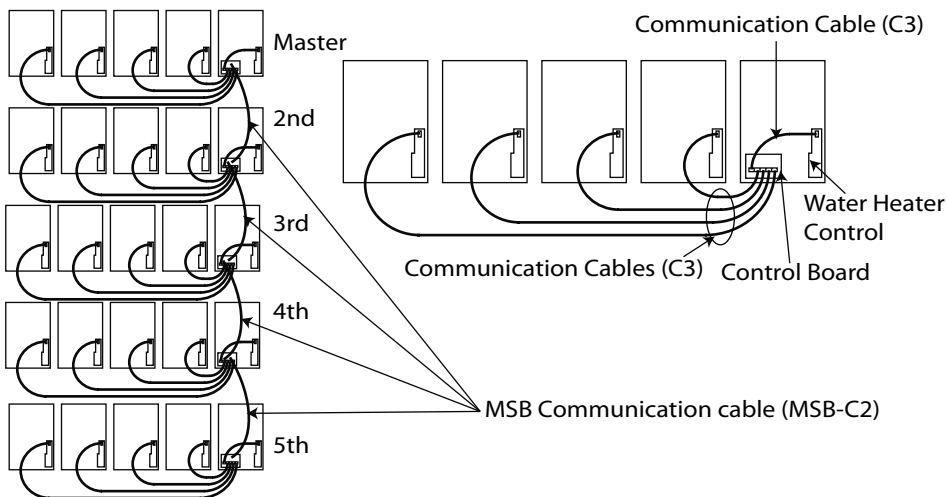
NOTE: The front cover panels of each water heater must be removed prior to completing the following installation procedures.

Kit Components

MSB-C3 (Pack D)

Parts List

Part	Qty
Communication Cable (9.8 ft, 3 m)	1
Instruction Sheet	1

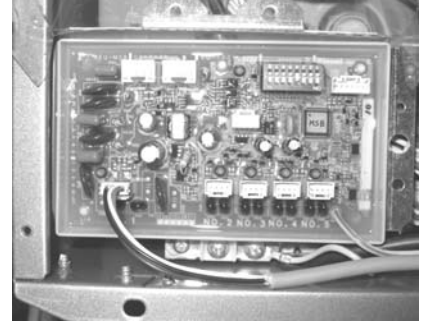


For Unit 1:

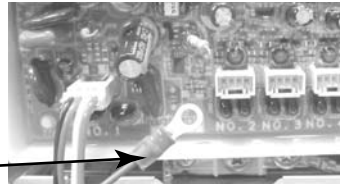
1) Remove the screw from the sheet metal reinforcement plate located at the bottom of the water heater cabinet, and then use it to secure the Control Board to the water heater cabinet.



2) Connect the connector from Communication Cable to socket No. 1 on Control Board.



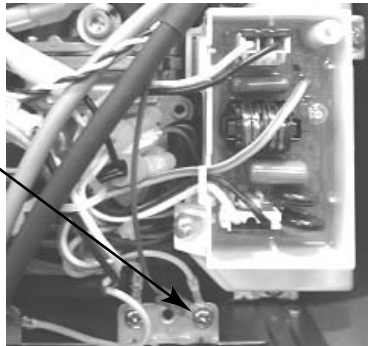
Ground wire of Communication Cable A



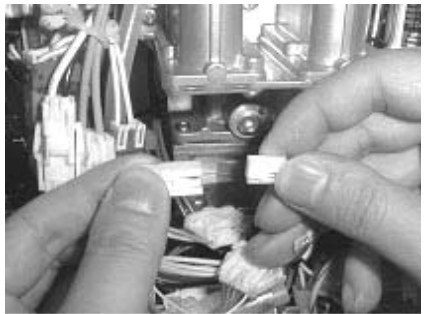
3) Connect the 4-pin connector from Communication Cable to the 4-pin socket located at the top of the water heater control board. The Communication Cable ground wire terminal should be grounded with the PC board ground wire.



Ground wire of Communication Cable A



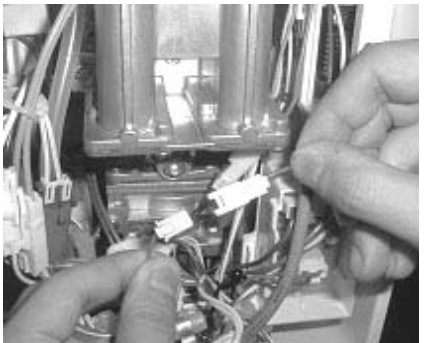
4) Remove the protective cap from the 2-pin connector marked "MS" (located in the middle of the water heater wiring harness).



5) Connect the 2-pin connector from Communication Cable into the 2-pin connector marked "MS".

6) Repeat steps 2 to 5 for Units 2, 3, 4, and 5, as applicable.

Note: Communication Cable for Unit 2 plugs into socket 2, Unit 3 plugs into socket 3, etc.



7) After making all of the connections to the Control Board, tighten all of the cable ties used to secure the Communication Cables. Ground all the Communication Cables.

